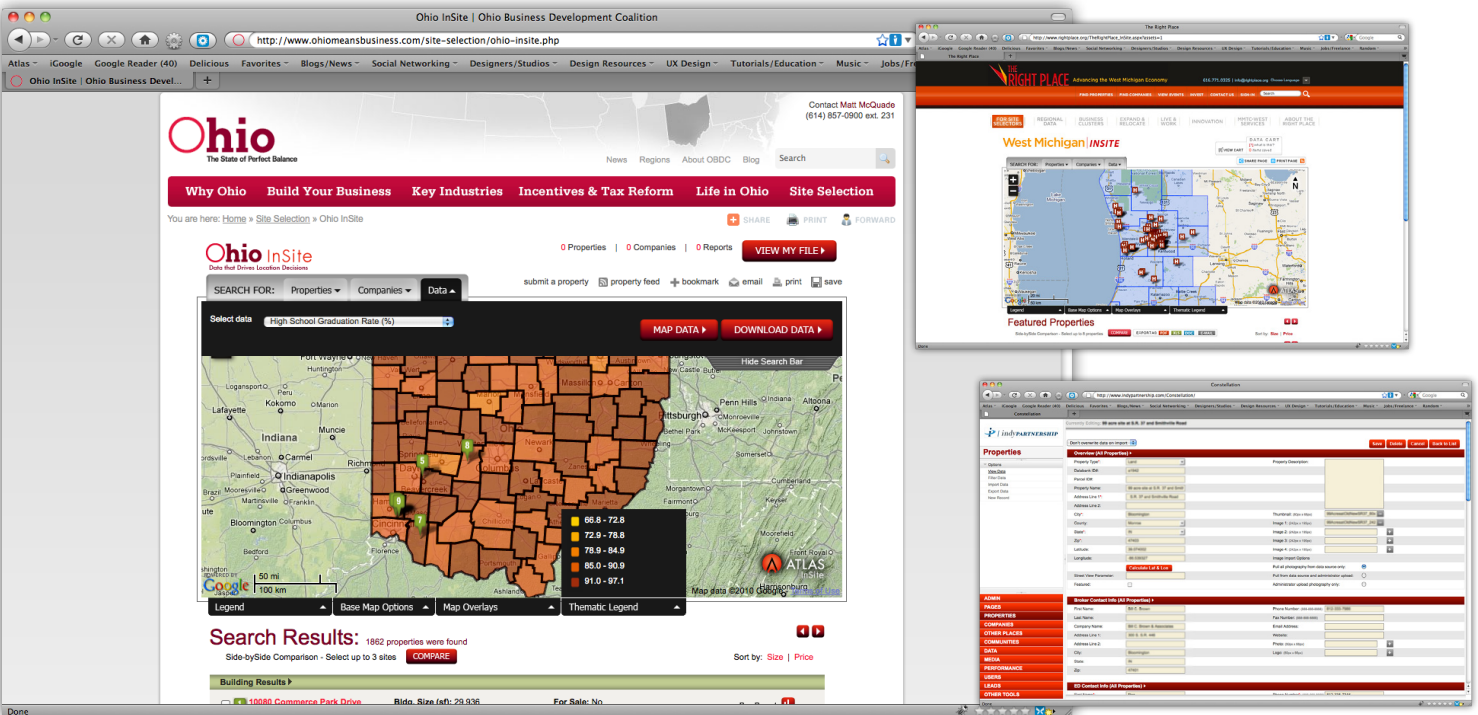


## A Robust Geographic Information System, Integrated Into Your Website

As a result of its simple interface, user-friendly backend and robust reporting capabilities, Atlas InSite is quickly becoming the standard GIS system for the most competitive economic development organizations. Developed specifically for community marketers and integrated seamlessly with our other products, Atlas InSite GIS allows your team to showcase available properties, local companies and community amenities **in just a few clicks**.

Unlike other systems on the market, Atlas InSite GIS is integrated directly into your website and managed by the same tool set. We built it that way because integrated solutions get 300% more traffic than non-integrated solutions.

Atlas InSite GIS is web-based and browser accessed. It is optimized for the fastest loading times possible. And all of your changes are made in a simple interface and published in real time.



Developed specifically for community marketers and integrated seamlessly with your other Atlas tools, Atlas GIS offers features necessary for promoting your community online including:

DYNAMIC WEB-BASED DATABASE	
✓	Searchable property, company, attraction and community databases in a simple, user-friendly interface, seamlessly integrated into your website
✓	Property and company comparison tools
✓	Featured properties and company listings selected and edited by your team can be an additional source of sponsorships
✓	Print, email and share page features
GIS MAPPING FEATURES	
✓	A dynamic color-coded map legend that differentiates office, industrial and land entries
✓	Polygon search and measurement tool
✓	Bing or Google maps with editable overlays that highlight universities, parks, attractions, hospitals and other customizable community amenities
✓	Oblique/Birdseye photography in addition to streetview, satellite and terrain views
DEMOGRAPHICS AND REPORTING FEATURES	
✓	Professionally formatted and customized data reporting
✓	User-defined drive time and radius reporting
✓	Community reports/data, including a Comparison Report with the ability to compare any city or county to up to 5 others anywhere in the U.S.
✓	Business/Demographics reports with drive time or radius reports including graphs
✓	Monthly reports on the top property, business and data searches on your site
INTEGRATED WEBSITE FEATURES	
✓	My Favorites tool to save properties and reports from throughout your website to create custom, client-friendly reports or brochures
EASY EDITING	
✓	AtlasOne - powerful back-end editing software with a simple, clean, efficient interface
✓	Automatic imports of property or contact data, including a new Salesforce integration
✓	Exporting tools for property, company and “other places” overlay data
✓	Customizable user access levels

PROSPECT MANAGEMENT	
✓	Integrate Prospect Management with your GIS tool and create impressive, easy to use proposal responses with the properties and documents you want to share with a prospect or site selector
✓	Password protected access to both submit to RFP's and submit the RFP to the prospect
PREMIUM FEATURES	
	GIS Sidebar Widgets–add a call to action to any page of your website to drive users to the GIS tool
	RSS feeds of your properties and companies
	A mobile version of the application, including property search
	Local InSite–a “mini” version of your InSite tool for local partners to display data in a smaller geography at minimal cost
	Full product support from the team that built the software

As a result of its simple interface, user-friendly back-end and robust reporting capabilities, Atlas InSite is quickly becoming the standard GIS system for the most competitive economic development organizations.

**Atlas can provide demonstrations of any of our software products at your convenience.  
To schedule a personalized demo, contact:**

Guillermo Mazier, Business Development

p: 303.292.3300 x232

m: 913.742.1720

e: guillermom@atlas-advertising.com

Linkedin: <http://www.linkedin.com/in/guillermomazier>